

WASHINGTON DC PRESENTS

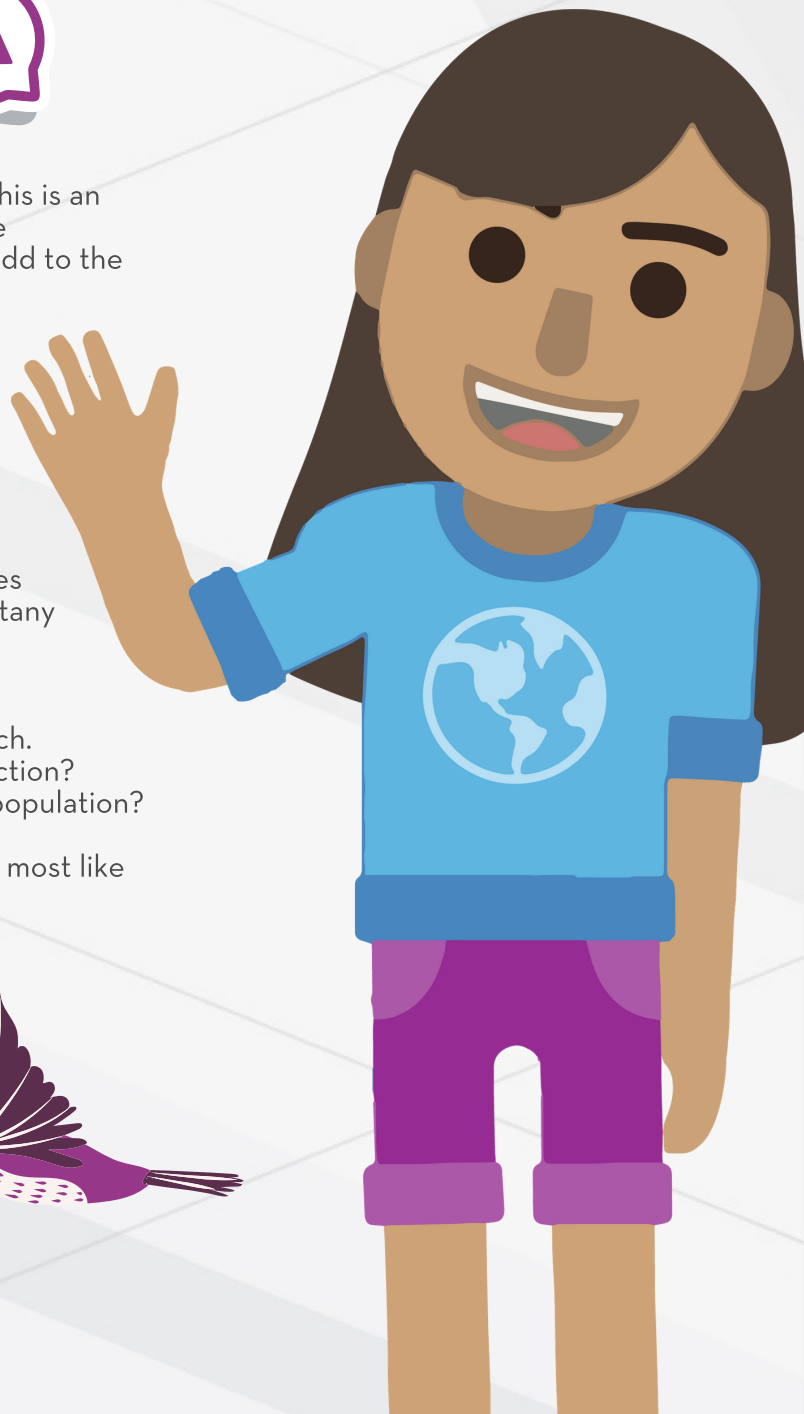
LEARNING ON LOCATION

Episode 3: Earth Day

DISCUSSION



1. Read about the history of [Earth Day](#). Do you feel this is an important holiday? Why? Do you think it should be celebrated more than it is now? What would you add to the celebration?
2. How important is it to have city land devoted to parks and recreation? Research DC's ParkScore and how it ranks in the U.S. [here](#). How does this compare to your hometown?
3. Check out some [videos](#) on the US Botanic Garden's corpse flower. How does the flower benefit from its stinky smell? Given the time it takes to bloom, what does this plant teach you about botany and the life cycles of plants?
4. Review the Smithsonian National Zoo's [endangered species list](#). Pick one animal to research. What has happened to put them in threat of extinction? What is the zoo doing to conserve or restore the population?
5. Which location highlighted in this video would you most like to see?



EXPLORATION

NATIONAL PARK SERVICE (NPS)

- Take a look at [NPS's history](#). Examine how many years it took to go from the first national park to the founding of the park service. See how President Theodore "Teddy" Roosevelt affected the park service system [here](#). How do you think the park service would differ without the president's conservation efforts?
- Check out how to [become a junior ranger](#). What national parks in your state have this program? The Junior Ranger program has the motto of "explore, learn, and protect." If you took the oath, how would you try to protect our national parks?

DC PARKS AND GARDENS

- In addition to the parks mentioned in the video, other DC green spaces include [Constitution Gardens](#), [Dumbarton Oaks](#), [Tudor Place](#), [Hillwood Estate & Gardens](#), and [Meridian Hill Park](#). In what ways have gardens and green spaces been used for DC residents other than rest and relaxation?
- Read Frederick Law Olmstead's [history](#) with the National Park Service. Discuss his use of deliberate planning and natural area preservation and how his thoughts influence Landscape Architecture.
- Listen to naturalist Melanie Choukas-Bradley in this [video](#) discuss the beauty of DC's parks. Do you prefer a manicured park or one that is more wild like Rock Creek Park?

A CITY ON TWO RIVERS

- Discover the two rivers that surround Washington, DC: the [Potomac](#) and the [Anacostia](#). How did these resources benefit the city's formation?
- A continuous 20-mile trail on both sides of the Anacostia River, the [Riverwalk Trail](#) system is a new recreational amenity and transportation alternative. How important do you think trails, or seamless and scenic travel, are to a city's residents and visitors?
- Check out the fun [water activities](#) you can do, including sailing, kayaking, canoeing and paddle boarding with our good friends at [Boating in DC](#).

GOVERNMENT REGULATIONS FOR ENVIRONMENTAL PROTECTION

- In the video, we discussed Earth Day demonstrations on the National Mall, held in order to urge the U.S. government to pass laws that protect and improve our environment. Take a look at some of this legislation, including the [Clean Air Act](#).
- Some policies are also determined through [Supreme Court](#) cases like Friends of the Earth v. Laidlaw (2000) and Massachusetts v. EPA (2007). Research and discuss how these [opinions](#) impacted environmental law and policies.
- The [Environmental Protection Agency](#) works to protect human health and the environment. You can [visit the agency's headquarters](#) in DC, located in between the White House and the National Mall, to learn how it enforces legislation, studies environmental issues and helps to clean contaminated areas. Then, take a look at [projects](#) you can do at home.

DC'S INITIATIVES FOR A CLEANER CITY

- In the video, we highlighted DC's efforts to [remove plastic bags](#) from our landfills. Examine other city initiatives, including [reducing foam food containers](#) and [plastic straws](#). Does your city or county have similar cleanup efforts?

ALTERNATIVE MODES OF TRANSPORTATION

- One of the best ways to reduce carbon emissions is to not use a car. There are [many other ways to travel around DC](#), like biking, boating, walking and using public transportation, including our zero-emission [Metrobus](#). Which mode of transportation would you like to use?

RESOURCES

[Visit Washington, DC](#)

[National Park Service](#)

[Theodore Roosevelt Island](#)

[Rock Creek Park](#)

[Kenilworth Aquatic Gardens](#)

[Cherry Blossom Trees](#)

[National Cherry Blossom Festival](#)

[Washington National Cathedral](#)

[U.S. National Arboretum](#)

[U.S. Botanic Garden](#)

[Kingman Island](#)

[Smithsonian National Museum of Natural History](#)

[Smithsonian's National Zoo](#)

[DC Department of Energy and Environment](#)

[Anacostia Riverkeeper](#)

[Serve DC](#)

[Casey Trees](#)

[Potomac Conservancy](#)

[Rock Creek Conservancy](#)

[Capital Bikeshare](#)

#MyDCcool